



實現黃述沾紀念公園

REALIZING REGGIE WONG PARK

Team: CAFEH (Doug), Linnean (Jim & Ellie), CCLT (Lydia) & Olin College (Scott, Jonathan & John)
小組成員



唐人街文本
Chinatown Context
Lydia Lowe



空氣質量
Air Quality
Dr. Scott Hersey



健康
Health
Dr. Doug Brugge



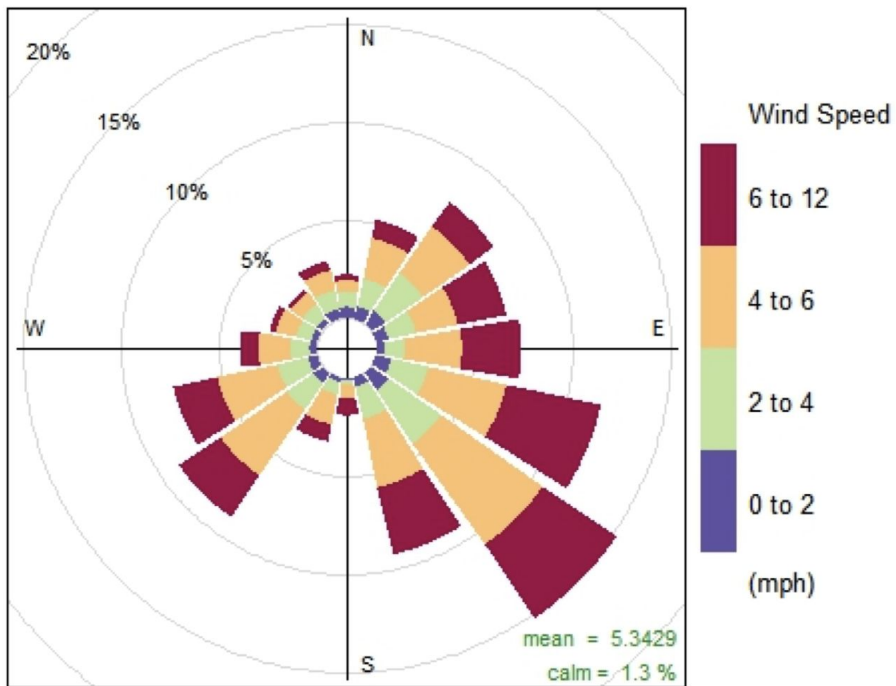
設計
Design
Jonathan Jacobs &
John Mathai



**AIR
QUALITY**
空氣質量

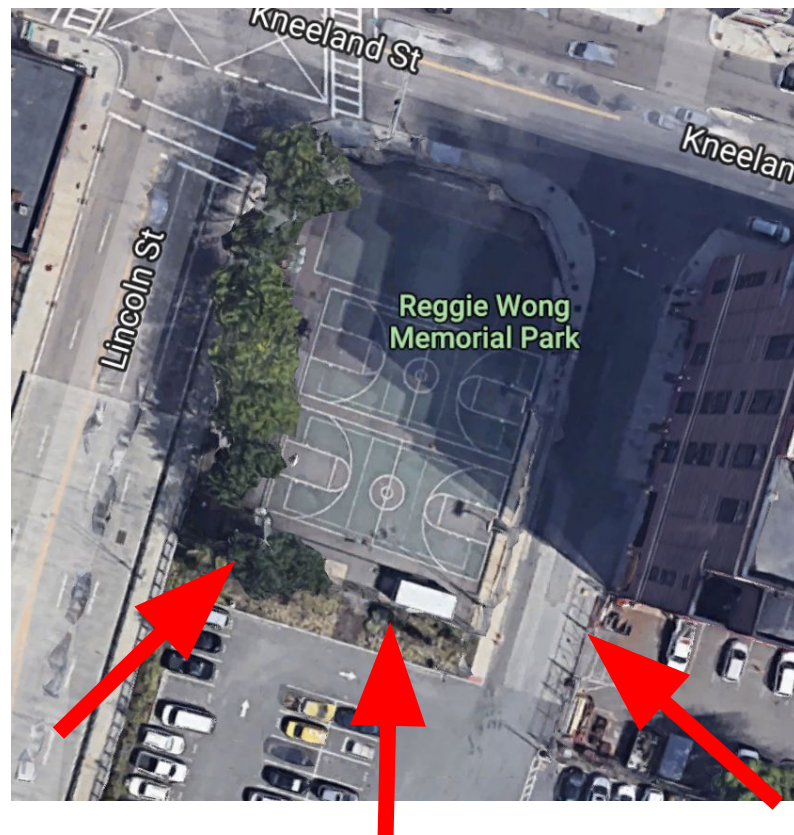
Dr. Scott Hersey

Wind data 风数据

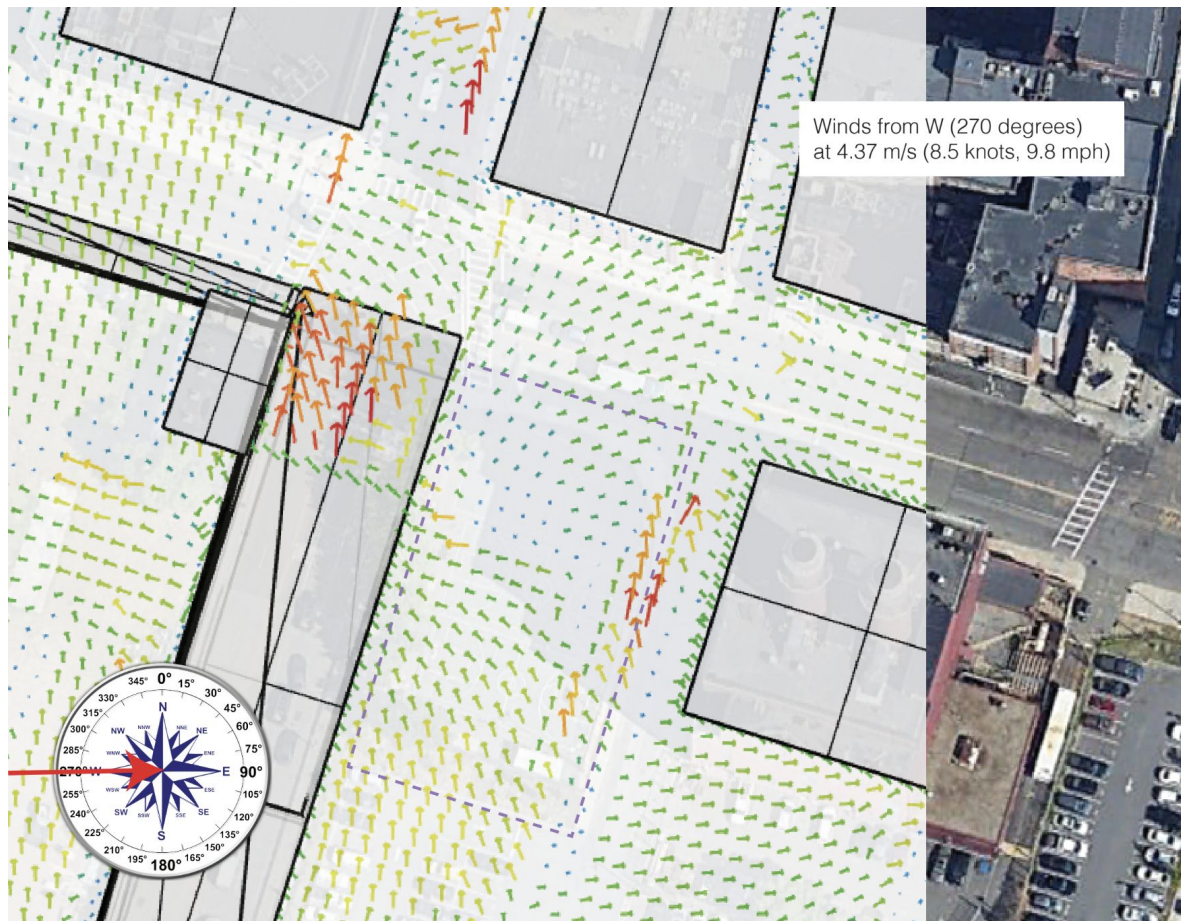


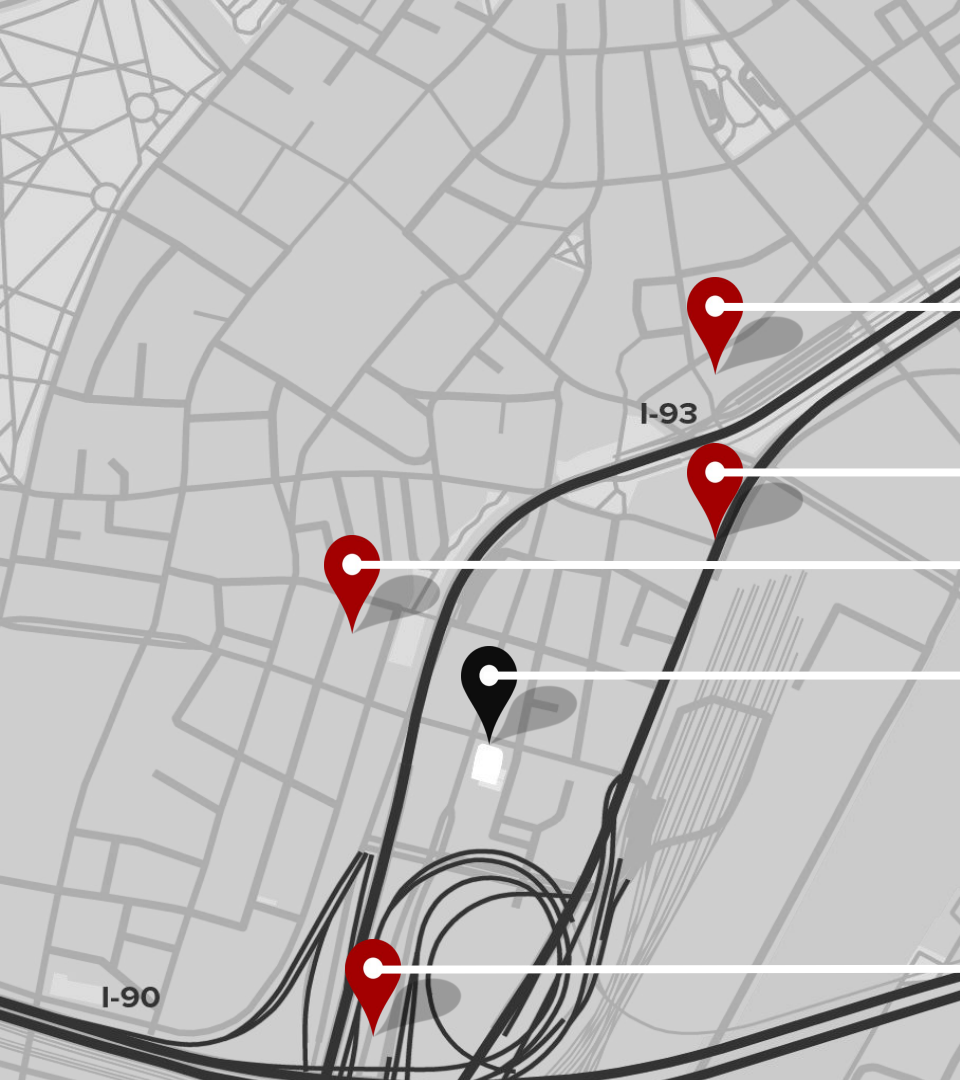
Frequency of counts by wind direction (%)

(m s⁻¹)



Wind data 风数据





TUNNELED FREEWAY
高速公路隧道

SOUTH STATION
南站

CHINATOWN RESTAURANTS
唐人街餐館

REGGIE WONG PARK
黃述沾紀念公園

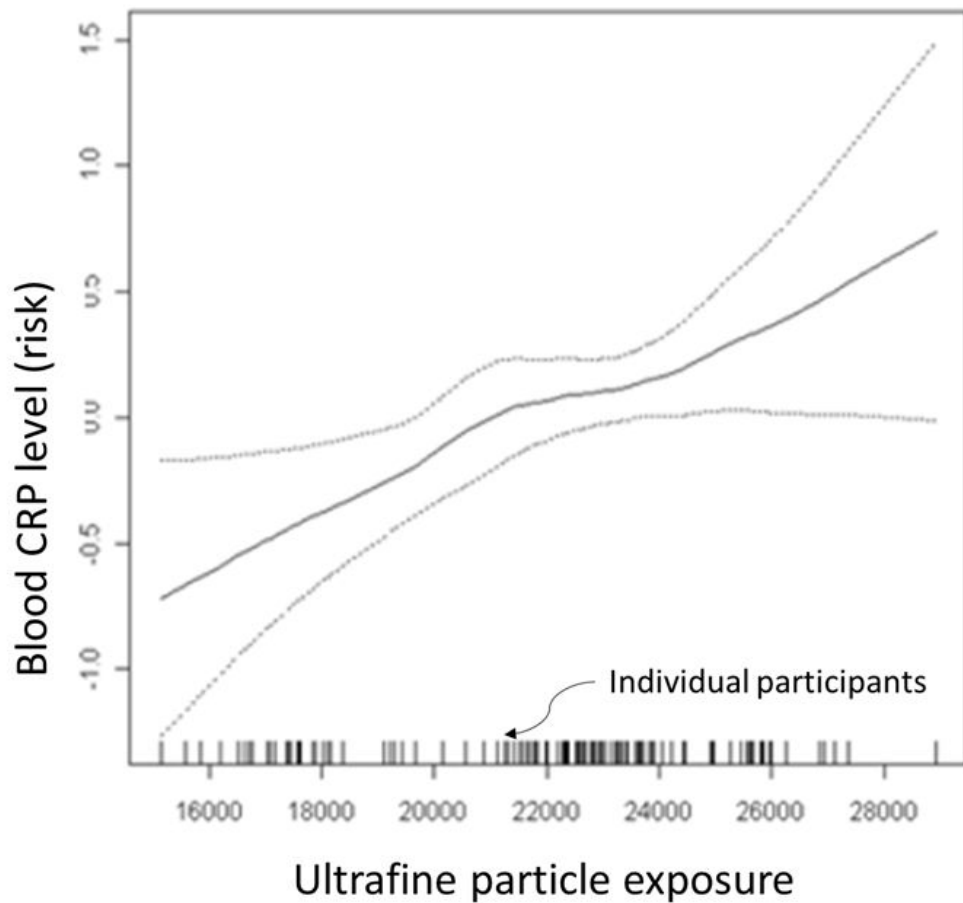
FREEWAY INTERCHANGE
高速公路交匯處

HEALTH

健康

Dr. Doug Brugge







**USER ORIENTED
COLLABORATIVE
DESIGN**

使用者導向協同設計

John Mathai & Jonathan Jacobs

WHAT IS UOCD?



Community Centered Design

- We **connect** with users to build relationships and understanding
- We **generate** ideas based on user interviews and input
- We seek feedback and **iterate** through codesign

以社區為中心的設計

- 與使用者建立關係和理解
- 根據訪問使用者和意見得出的想法
- 尋求意見和展開共同設計



The Process

- Started January 2018
- Connected with 55+ people about RWP
- Created design criteria based on interviews and co-designs

程序

- 在 2018年1月開展
- 關於黃述沾紀念公園與超過55人聯繫
- 基於 意見和共同設計擬訂設計準則





■ in 1 category

■ 2

■ 3

Seating
Bathroom
Shade
Water Fountain
Trash Cans
Tables and Chairs

COMFORT

Resurfaced Courts
Aligned Courts
Integrated Storage
New Hoops
Removed Curb
Seating
Lighting
Water Fountain

SPORTS

Pollution-Deflection Walls
Trash Cans
Vegetation
Removed Curb
Shade
Bathroom

HEALTH

Vegetation
Shade
Artwork
Walls
Tables and Chairs

BEAUTY

舒適

座椅
洗手間
樹蔭
飲水泉
垃圾桶
桌椅

體育運動

重鋪球場
調準球場
綜合存物
新球架
拆除路邊圍石
座椅
照明
飲水泉

健康

緩解污染
牆壁
垃圾桶
植物
拆除路邊圍石
遮蔭
洗手間

美觀

植物
遮蔭
藝術
牆壁
桌椅

WHAT DID WE MISS? 我們錯過了什麼？

0:30

WHAT DID WE MISS? 我們錯過了什麼？



實現黃述沾紀念公園

Realizing Reggie Wong Park

回答夥伴:

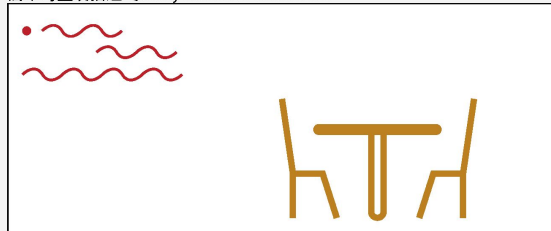
Answer with a partner:

我們錯過了什麼？What did we miss?

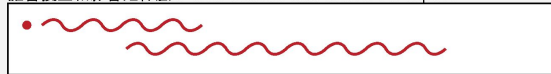
沒有 Nothing



簡單勾畫或描述 Quickly sketch or describe it



誰會獲益和影響是什麼？Who benefits and what is the impact?



你能想到有誰會因這擴充而受到負面影響嗎？

Can you think of anyone who might be negatively affected by this addition?



權衡以上兩個問題。是否應加到設計要求清單中？

Weigh the two questions above. Should it be added to the list of design requirements?

是 Yes

否 No

WHAT DID WE MISS? 我們錯過了什麼？



實現黃述沾紀念公園

Realizing Reggie Wong Park

美觀 Beauty

按公園美觀的重要性從大至小排列以下設計要求
Rank the following design requirements in order of most to least important for a beautiful park

Vegetation	植物
Shade	遮蔭
Artwork	藝術
Walls	牆壁

植物
遮蔭
藝術
牆壁

Vegetation
Shade
Wall
Tables / chairs
Artwork

Tables & Chairs

簡單勾畫或描述最重要的設計要求

Quickly sketch or describe how you would implement the most important design requirement

- lots of trees around the perimeter
- fence
- flower bed near storage
- vine 1 on all at the fence
- orchids on the fence

實現黃述沾紀念公園

Realizing Reggie Wong Park

健康 Health

按公園提倡公共衛生的重要性從大至小排列以下設計要求
Rank the following design requirements in order of most to least important for the park to promote public health

Pollution-Defecation
Walls

緩解污染
牆壁

Trash Cans

垃圾桶

Vegetation

植物

Removed Curb

拆除路邊圍石

Shade

遮蔭

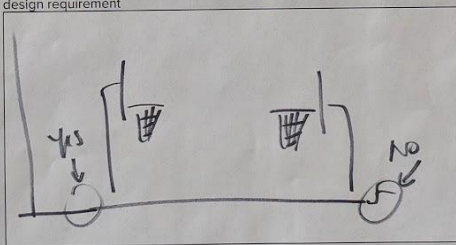
Bathroom

洗手間

Removed Curb
Trash cans
Shade
Pollution Walls
Bathroom
Vegetation

簡單勾畫或描述最重要的設計要求

Quickly sketch or describe how you would implement the most important design requirement



實現黃述沾紀念公園

Realizing Reggie Wong Park

舒適 Comfort

按公園舒適度的重要性從大至小排列以下設計要求
Rank the following design requirements in order of most to least important for a comfortable park

Seating
Bathroom
Shade
Water Fountain

座椅
洗手間
樹蔭
飲水泉

Trash Cans

垃圾桶

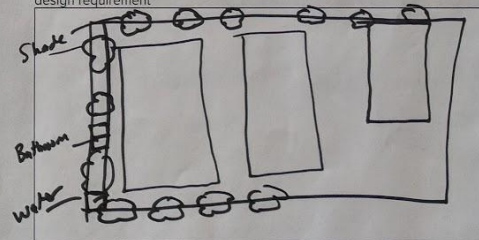
Tables & Chairs

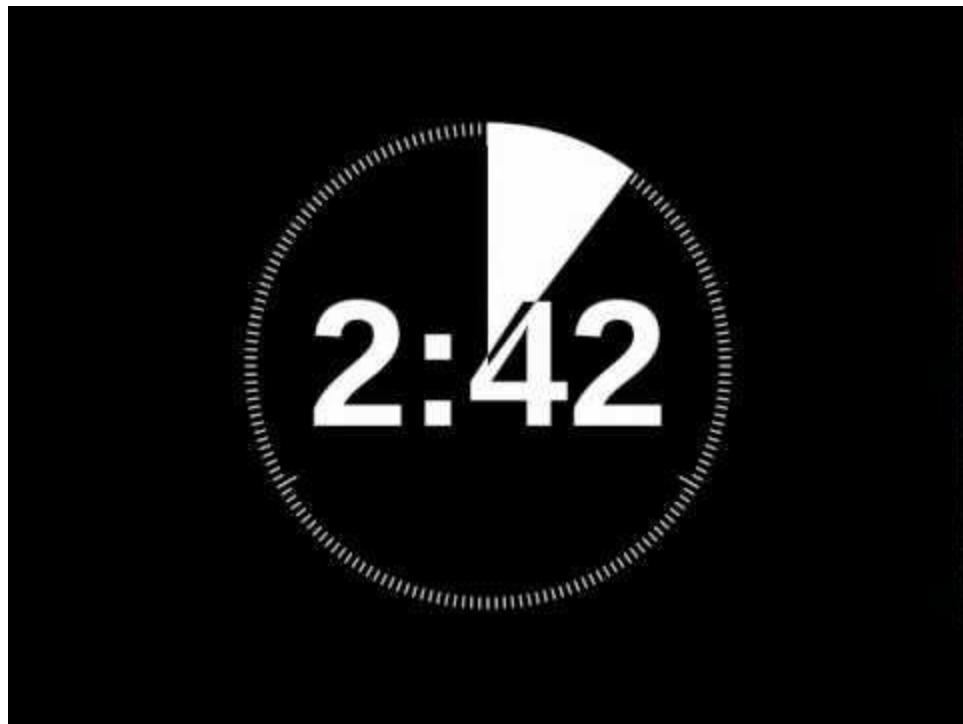
桌椅

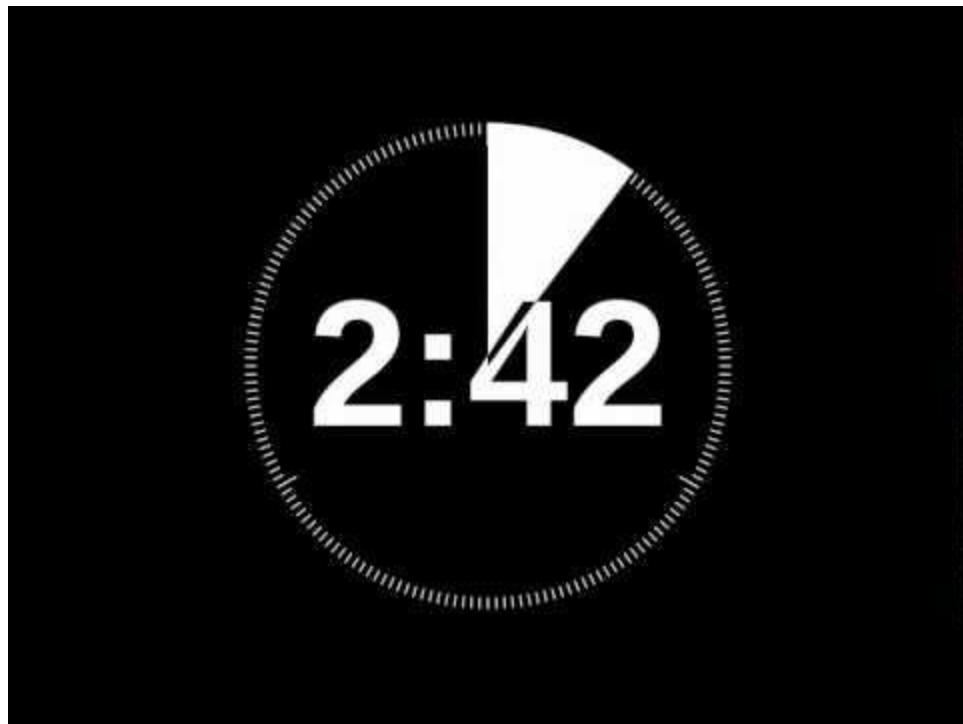
Bathroom
Water fountain
Trash cans
Shade
Tables and Chairs

簡單勾畫或描述最重要的設計要求

Quickly sketch or describe how you would implement the most important design requirement







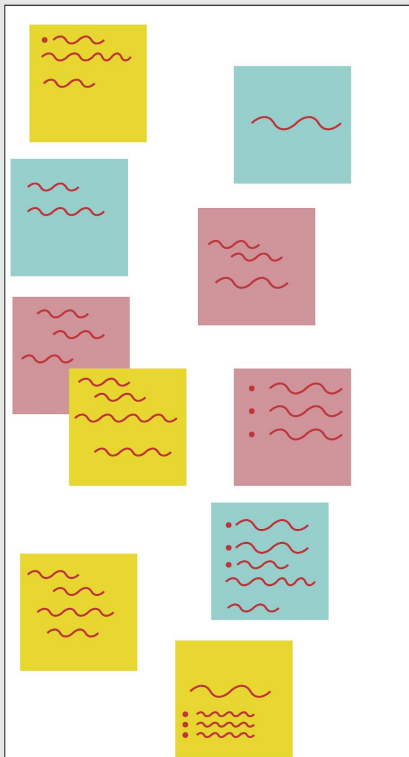


Realizing Reggie Wong Park

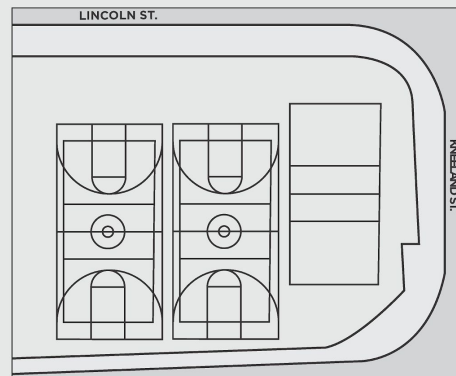
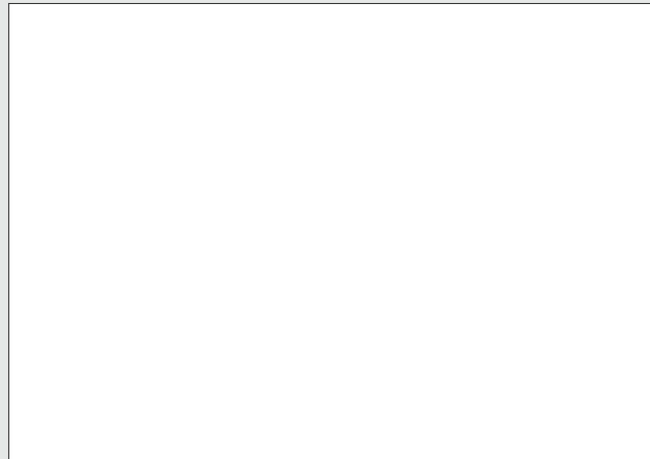
Design Element



Ideation



Describe and Sketch





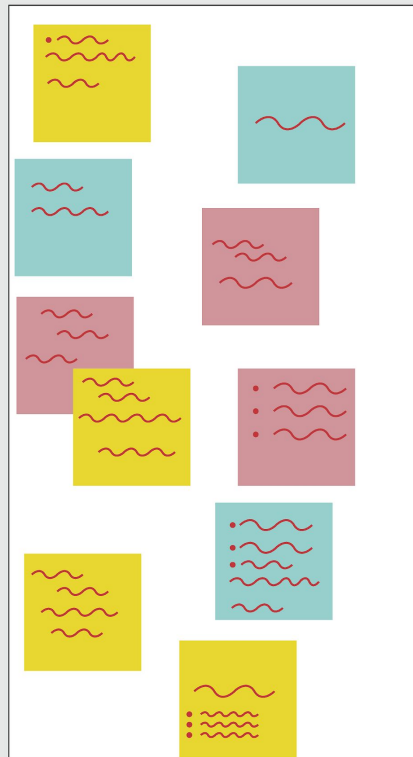


Realizing Reggie Wong Park

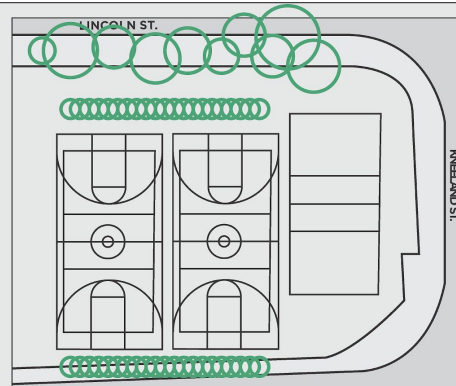
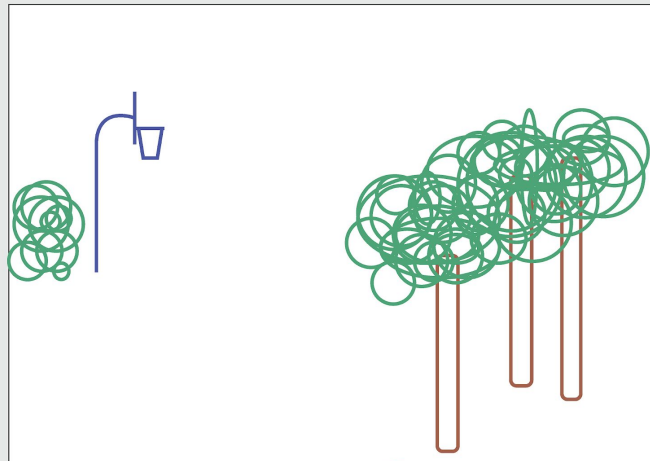
Design Element



Ideation



Describe and Sketch



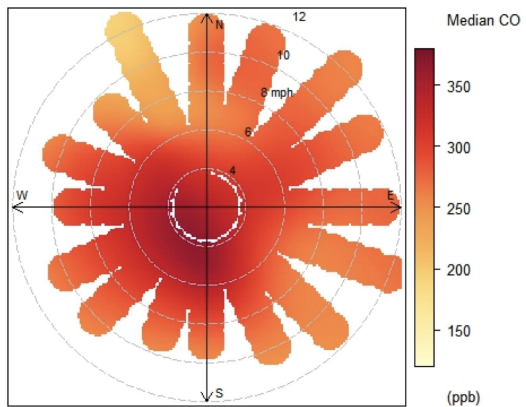




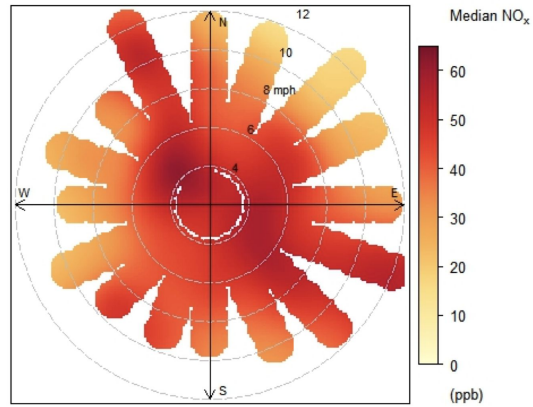


Sampling period: April-May 2018

Carbon Monoxide (CO)



Nitrogen Oxides (NO_x)



Particle Concentration (PNC)

